



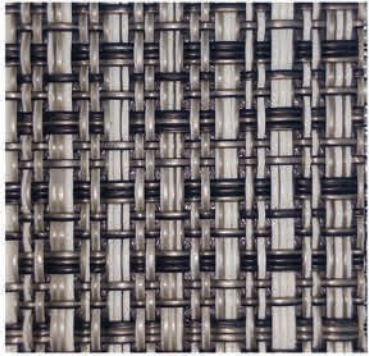
*Innovative Floors*



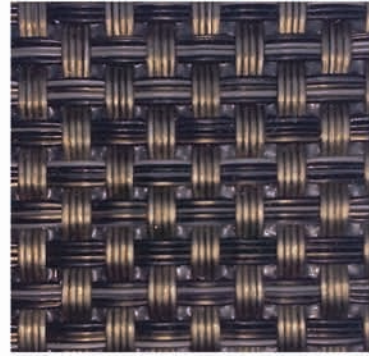
Using Advanced Material Yarn Extrusion and Computer-Aided Weaving Technology. **TAMI WOVEN FLOORS** is the next generation of innovative floor solution available in the market.

The woven floor is reinforced with a polymeric underlay to maintain flexibility and durability of the material.

**Basket Metro**



**Basket Swiss Bronze**



**Boli Ecrú**



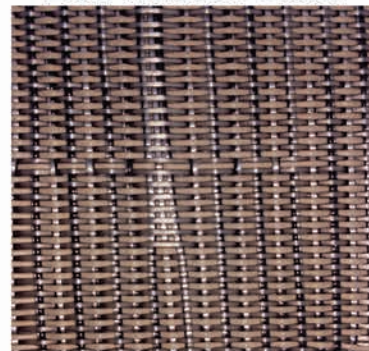
# CONCEPT

A unique woven structure that interacts with light to create original settings.

**Boli Skin**



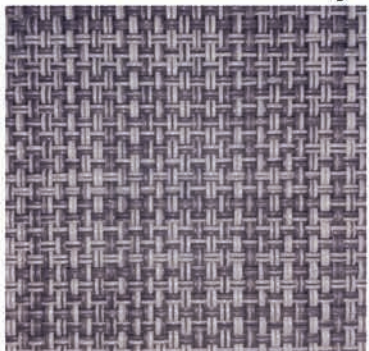
**Boli Russet Gold**



**Boli Seal Black**



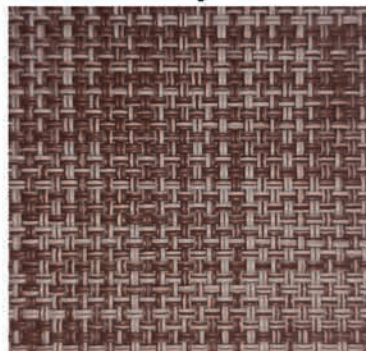
**Reed Summit Gray**



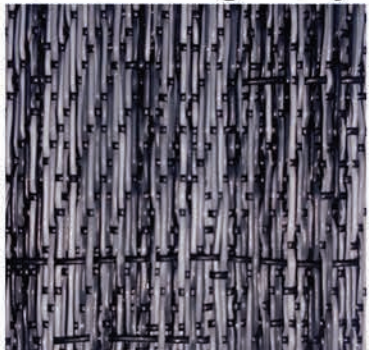
**Reed Caramelo**



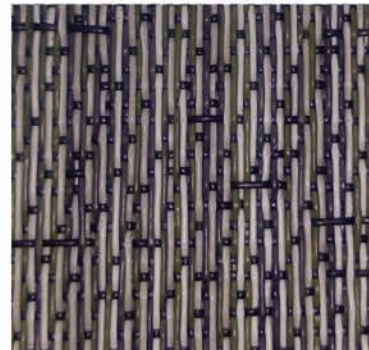
**Reed Spicenut**



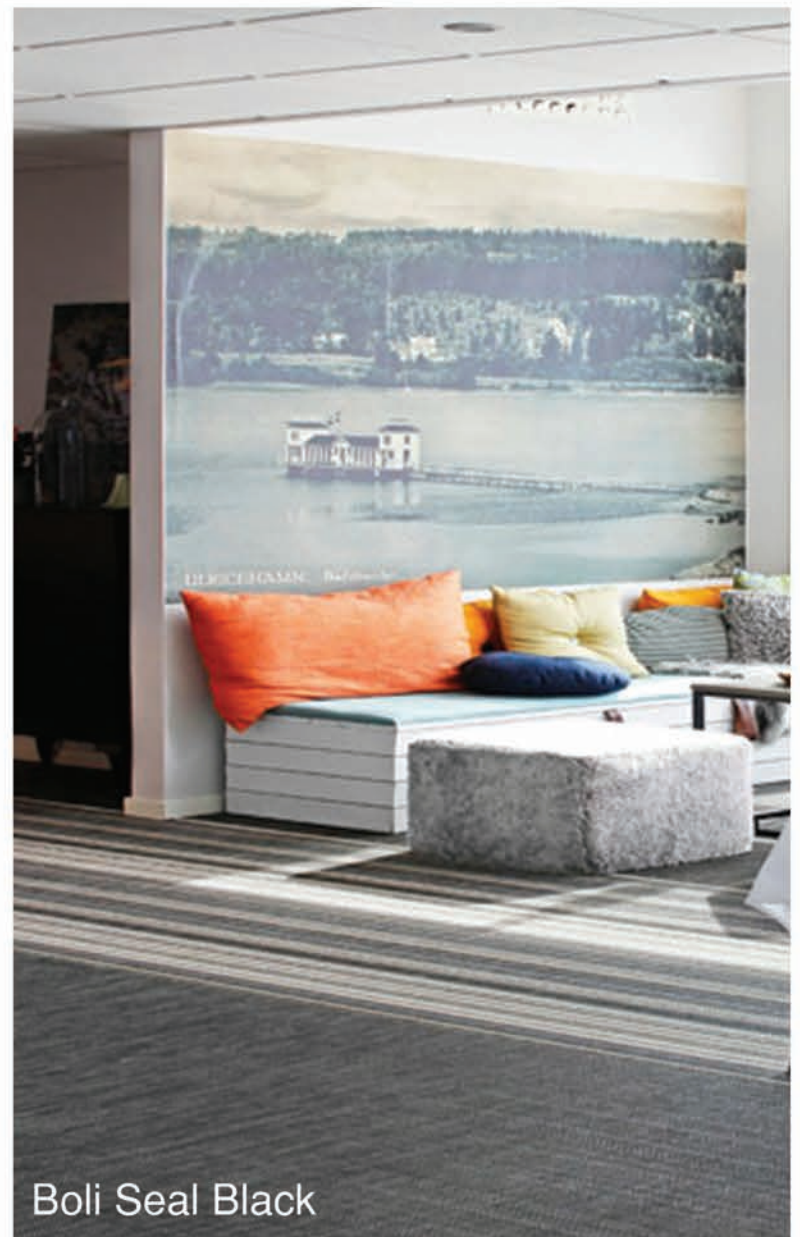
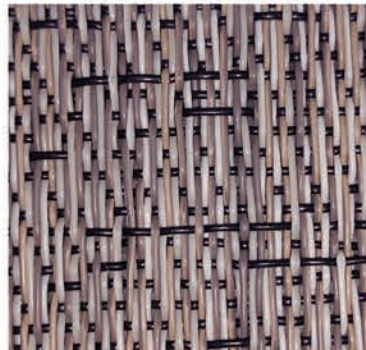
**Cane Midnight Sky**



**Cane Mason**



**Cane Amazon**



**Boli Seal Black**

**Raffia NutCreek**



**Raffia Dark Bronze**



**Cane Bisque**



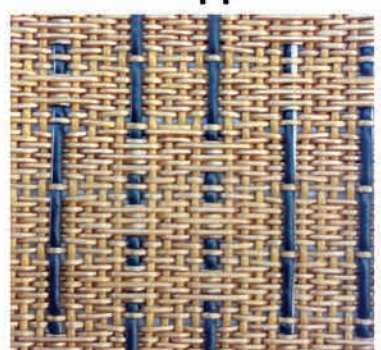
**Chevron Galaxy**



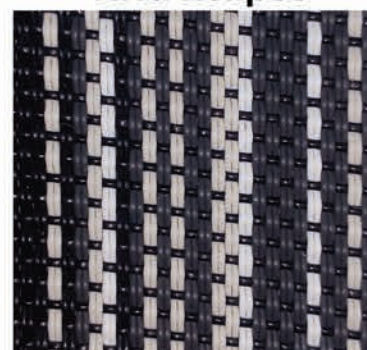
**Wick Sesame**



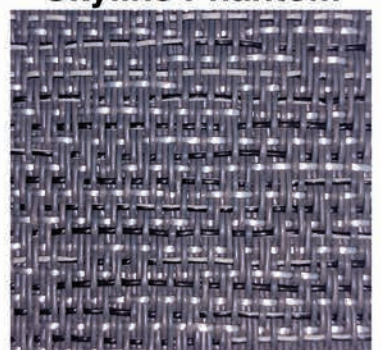
**Grass Dapper Tan**



**Riva Eclipse**

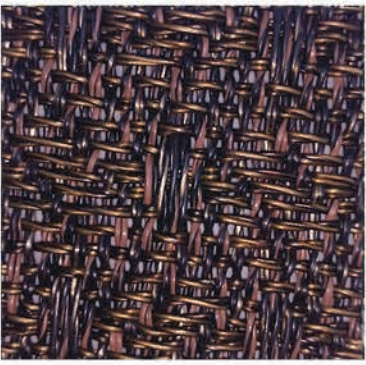


**Skyline Phantom**



**Boli Russet Gold**

**Argyle Black Fudge**



**Argyle Glam Bronze**



# EDGE

An interesting mix of colors for a tactile depiction of a timeless texture.

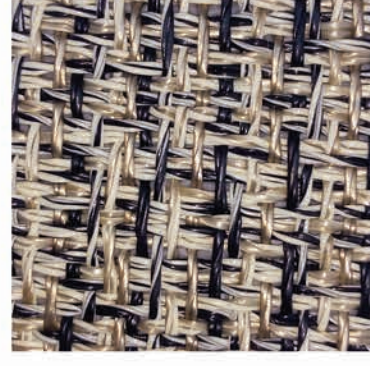
**Seagrass Wild Rice**



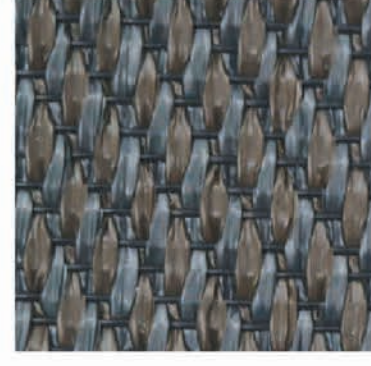
**Coir Mix Burlay**



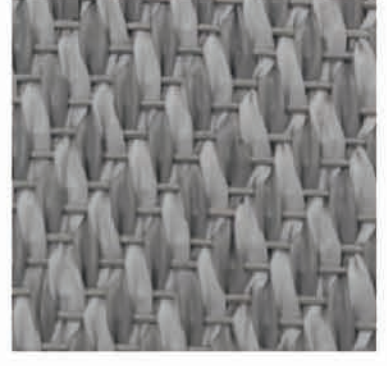
**Coir Symphony**



**Hemp Caribou**



**Hemp Crystal Gray**



**Hemp Dark Cocoa**



**Hemp Domino Black**



**Hemp Hazelnut**



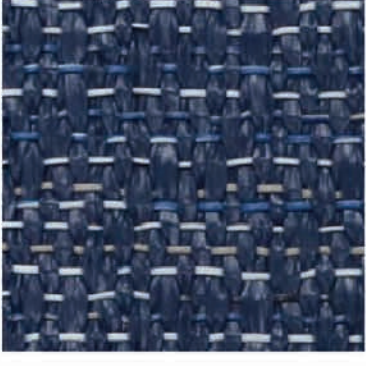
**Hemp Metallic Silver**



**Hemp MoonLight**



**Hemp Oxford Blue**



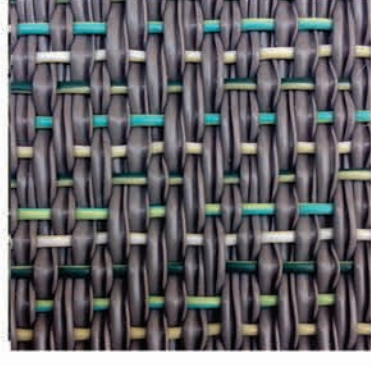
**Hemp Pearl Copper**



**Hemp Smith & Black**



**Hemp Sage**

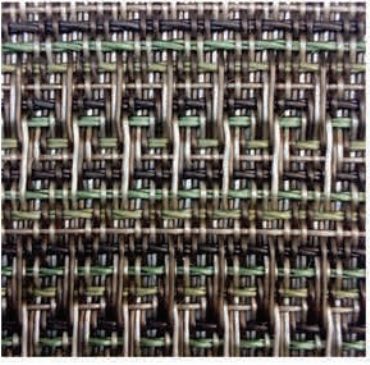


**Hemp Vanilla Sky**

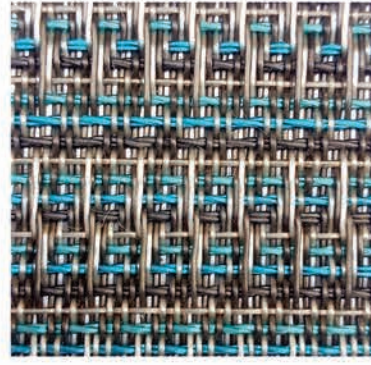


**Hemp Dark Cocoa**

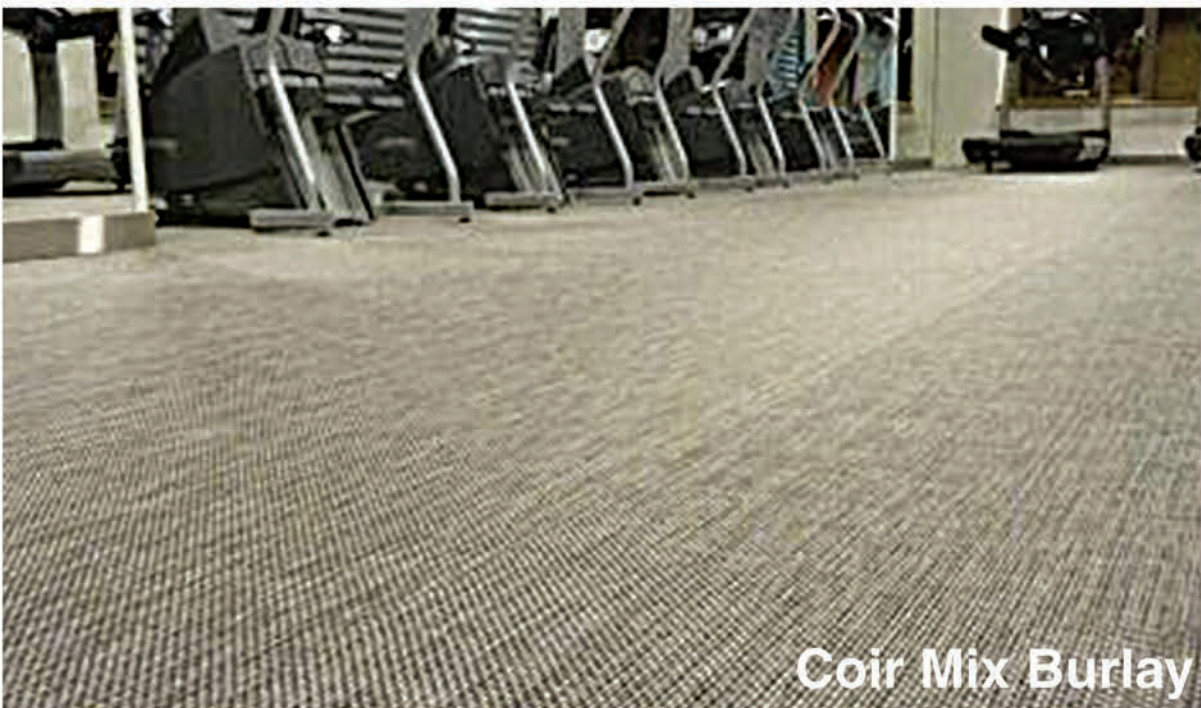
**Ikat Dutch Silk**



**Ikat Peacock**

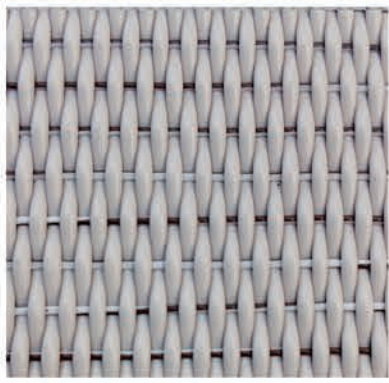


**Tweed Salt**

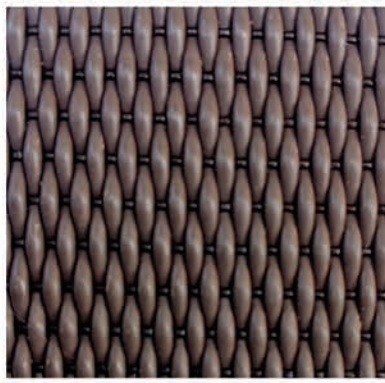


**Coir Mix Burlay**

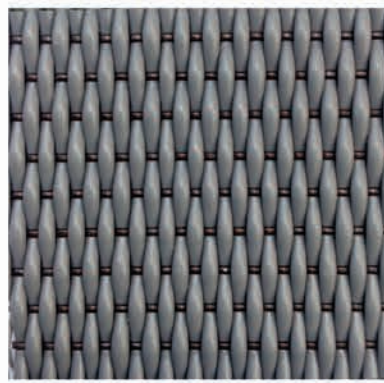
Match Cappuccino



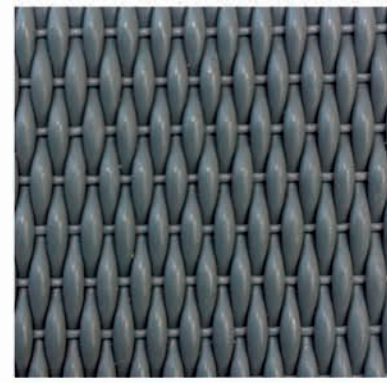
Match Dark Roast



Match Lava



Match Pebble



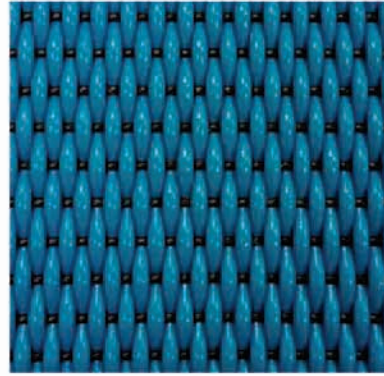
Match Satin Black



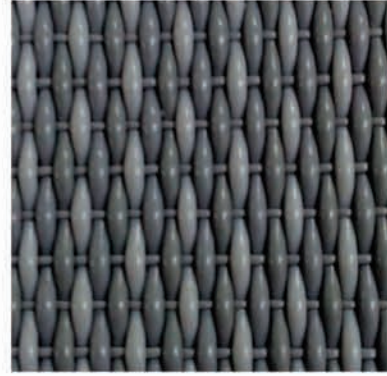
# SELECT

Creating warm interior colors from nature inspired hues and patterns.

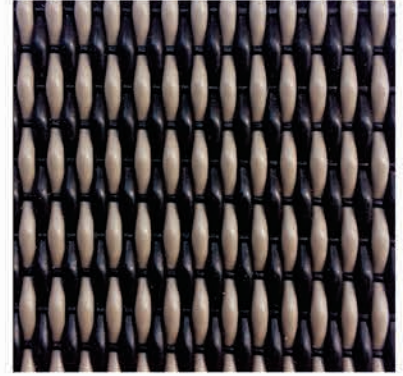
Match Turquoise



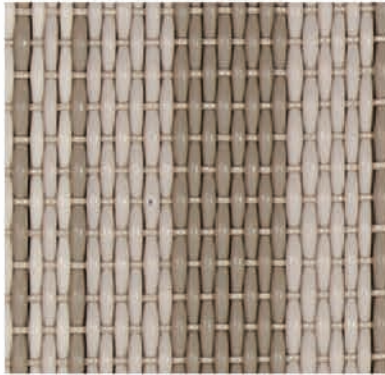
Soho Concrete



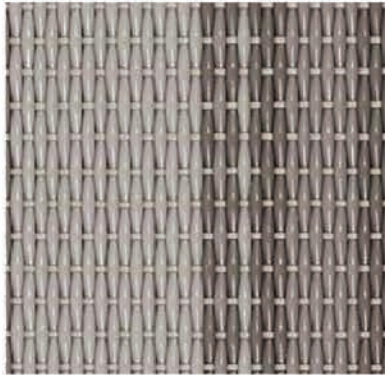
Soho Black Bean



Soho Dovetail



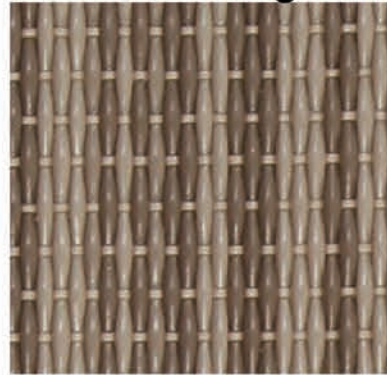
Soho Everest



Soho Gramecy



Soho Mirage



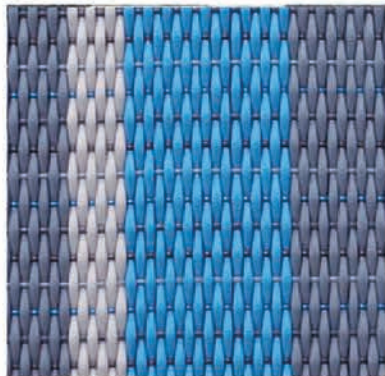
Soho Potter



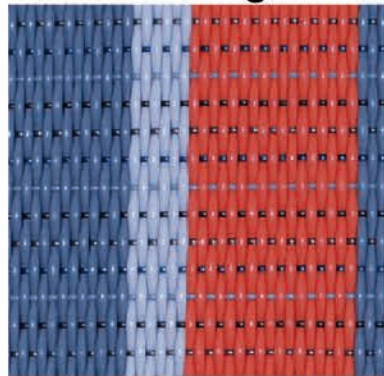
District Vicar



District Hamilton



District Regatta



PATTERN	Roll / 2m Width	
	Thickness / mm	Weight kg / m <sup>2</sup>
CONCEPT Series	2.6	3.0
EDGE Series	2.8	3.2
SELECT Series	3.0	3.5



District Vicar

**TAMI**  
WOVEN FLOORS  
*Innovative floors*

1 WOVEN TOP SIDE  
2 PE/PP FIBER  
3 FIBER GLASS  
4 PVC BACKING

Made from vinyl fibers woven in looms to create a surface finishing material. It is constructed with a rigid PVC backing material. It comes in rolls with a width of 2.00 meters and length of 15.00 meters. Installation is similar to method used for carpets.



*Designed for the World around you*

IMAGE SHOWN MAY VARY FROM ACTUAL PRODUCT

[www.gtstoneworks.com.ph](http://www.gtstoneworks.com.ph)